



**REGIONAL SPECIALISED METEOROLOGICAL CENTRE-TROPICAL CYCLONES, NEW DELHI  
TROPICAL WEATHER OUTLOOK**

---

**DEMS-RSMC TROPICAL CYCLONES NEW DELHI DATED 29.07.2021**

**TROPICAL WEATHER OUTLOOK FOR NORTH INDIAN OCEAN (THE BAY OF BENGAL AND ARABIAN SEA) VALID FOR NEXT 120 HOURS ISSUED AT 0600 UTC OF 29.07.2021 BASED ON 0300 UTC OF 29.07.2021.**

**BAY OF BENGAL:**

YESTERDAY'S, WELL MARKED LOW PRESSURE AREA OVER COASTAL BANGLADESH AND ADJOINING WEST BENGAL PERSISTS AT 0300UTC OF TODAY, THE 29<sup>TH</sup> JULY 2021 . THE ASSOCIATED CYCLONIC CIRCULATION EXTENDS UPTO UPPER TROPOSPHERIC LEVELS. IT IS LIKELY TO MOVE WESTWARDS ACROSS WEST BENGAL, JHARKHAND AND BIHAR DURING NEXT 48 HOURS.

CONVECTION ASSOCIATED WITH THE ABOVE WELL MARKED LOW PRESSURE AREA OVER EXTREME SOUTHWEST BANGLADESH ADJOINING COASTAL GANGETIC WEST BENGAL AND NEIGHBOURHOOD LAY CENTERED WITHIN HALF A DEGREE OF 22.5N / 89.0E OVERLAND. ASSOCIATED SCATTERED LOW AND MEDIUM CLOUDS WITH EMBEDDED INTENSE TO VERY INTENSE CONVECTION LAY OVER SOUTH GANGETIC WEST BENGAL SOUTH BANGLADESH & NORTH BAY OF BENGAL. MINIMUM CLOUD TOP TEMPERATURE (CTT) IS MINUS 92 °C. THE SYSTEM REMAINED ALMOST STATIONARY DURING PAST 24 HRS.

BROKEN LOW AND MEDIUM CLOUDS WITH EMBEDDED INTENSE TO VERY INTENSE CONVECTION LAY OVER NORTH BAY OF BENGAL. SCATTERED LOW AND MEDIUM CLOUDS WITH EMBEDDED MODERATE TO INTENSE CONVECTION LAY OVER CENTRAL BAY OF BENGAL AND ANDAMAN SEA.

**PROBABILITY OF CYCLOGENESIS (FORMATION OF DEPRESSION) DURING NEXT 120 HRS):**

24 HOURS	24-48 HOURS	48-72 HOURS	72-96 HOURS	96-120 HOURS
NIL	NIL	NIL	NIL	NIL

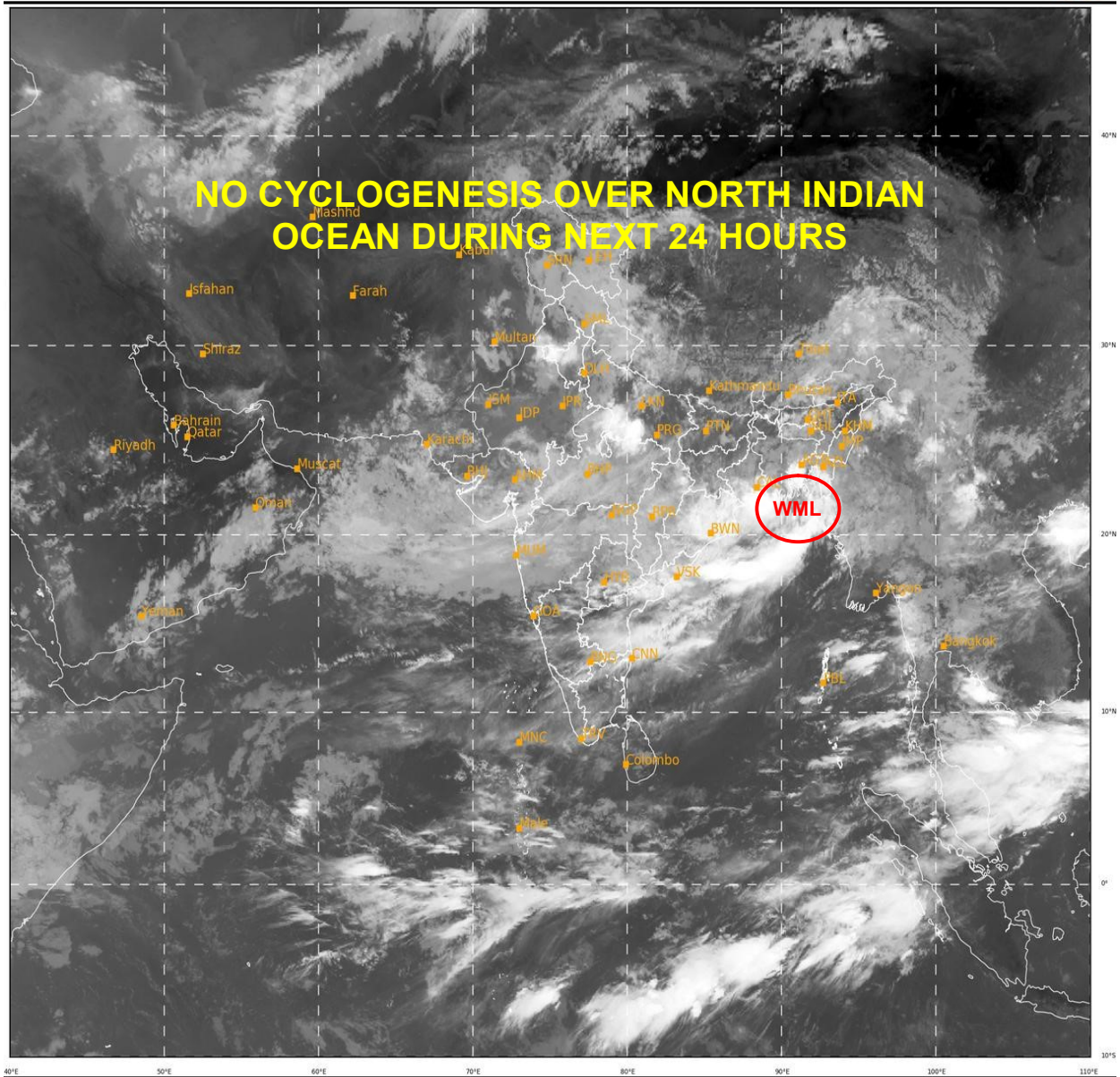
**ARABIAN SEA:**

SCATTERED LOW AND MEDIUM CLOUDS WITH EMBEDDED WEAK TO MODERATE CONVECTION OVER NORTH,CENTRAL & SOUTHEAST ARABIAN SEA.

**PROBABILITY OF CYCLOGENESIS (FORMATION OF DEPRESSION) DURING NEXT 120 HRS):**

24 HOURS	24-48 HOURS	48-72 HOURS	72-96 HOURS	96-120 HOURS
NIL	NIL	NIL	NIL	NIL

**REMARKS:** NIL



348

930

IMD, DELHI

- **WML STANDS FOR WELL MARKED LOW PRESSURE AREA**